

Nintendo DSi XL TOP, Bottom LCD's and/or Touch Screen Replacement



These instructions will show you how to open the DSi XL console to replace the Top, Bottom LCD,s and/or touch screen. Opening your Console will void your warrantee, and ConsoleParts4U does not accept any responsibility for broken consoles due to the installation process. You proceed at your own risk.



Remove Battery

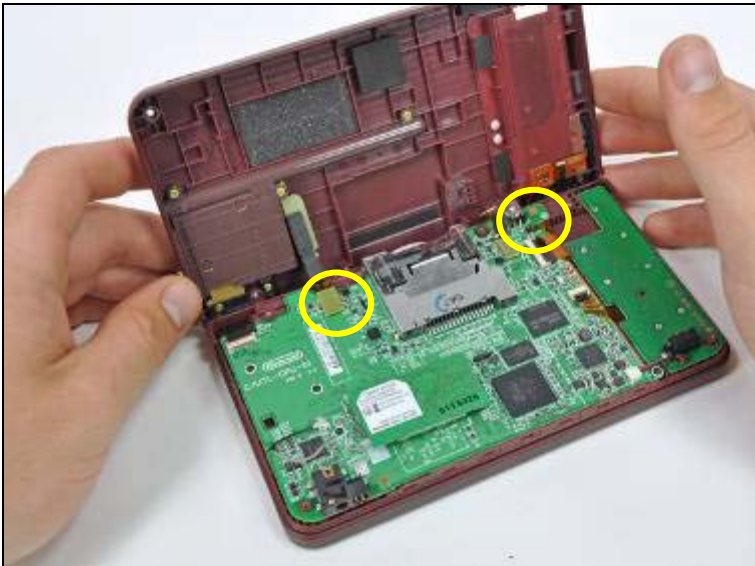
- Remove the two Phillips screws securing the battery cover to the back of the handheld console.
- Lift the battery cover off the back of the DSi XL.
- Lift the battery from the DSi XL.



- Remove the following seven Phillips screws that secure the lower case to the rest of the DSi XL:
 - Four silver 5.3 mm screws
 - Two black 5.3 mm screws
 - One black 2.5 mm screw



- Lift the lower case from the front edge.
- Rotate the lower case away from the DSi.
- The lower case cannot be completely removed yet, since it is still connected to the motherboard.



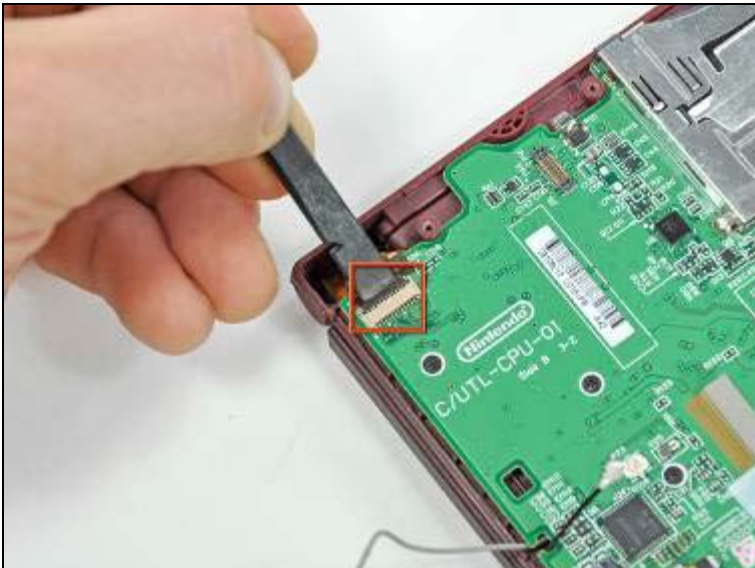
- Using a spudger, pry the SD card/right shoulder button connector off its socket.
- Pry the volume button/left shoulder button connector off its socket on the motherboard with a spudger.



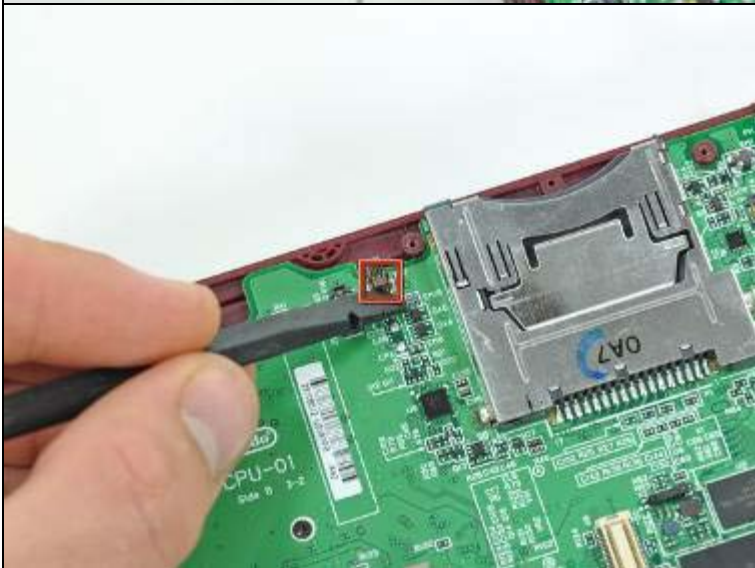
- Lift the Wi-Fi board up off its socket on the motherboard.
- Do not attempt to completely remove the Wi-Fi board yet. It is attached to the motherboard by an antenna cable.
- Use a spudger to pry the WiFi plug off its socket from the underside of the WiFi Module.



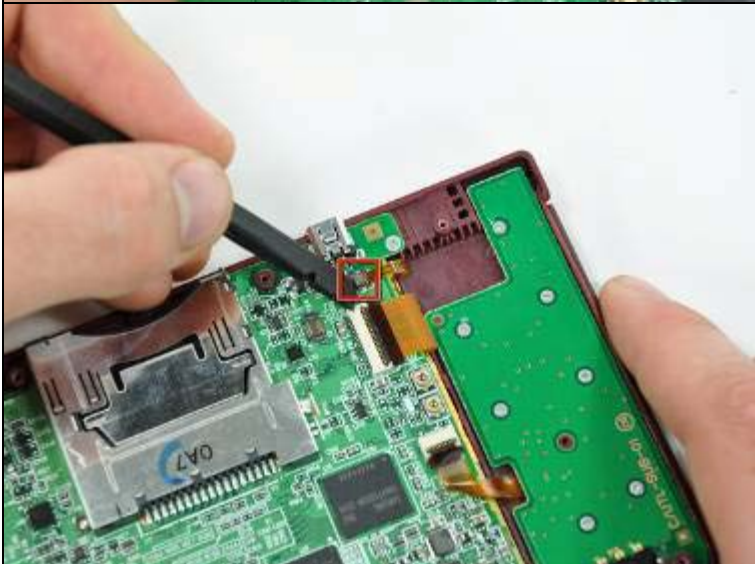
- Use a spudger to pry the microphone cable off the motherboard.
- Pry from underneath the cable.



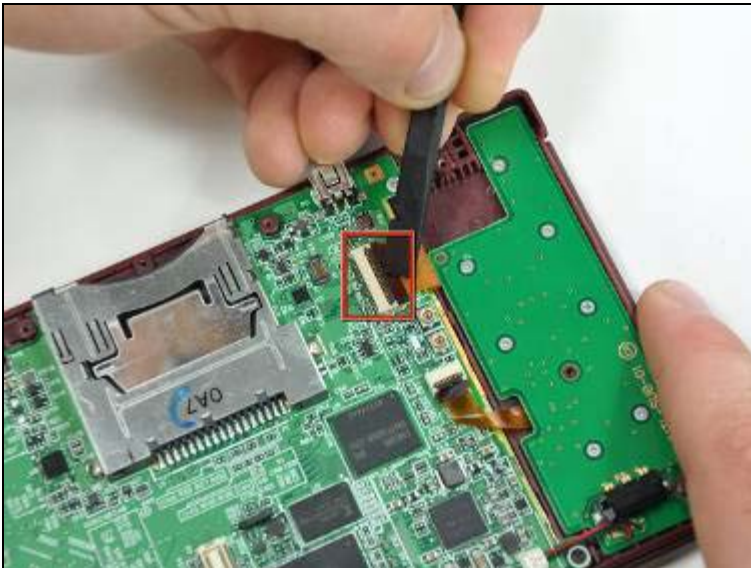
- Using the flat end of a spudger, flip up the retaining flap on the camera ribbon ZIF connector.
- Use the pointed end of a spudger to pull the camera ribbon from the ZIF connector.



- Using the flat end of a spudger, flip up the retaining flap on the touchscreen cable ZIF connector.
- With the pointed end of the spudger, pull the touchscreen cable from its connector on the motherboard.



- Using the flat end of a spudger, flip up the retaining flap on the backlight cable ZIF connector.
- With the pointed end of the spudger, pull the backlight cable from its connector on the motherboard.



- Using the flat end of a spudger, flip up the retaining flap on the lower display data cable ZIF connector.
- With the pointed end of the spudger, pull the lower display data cable from its connector on the motherboard.



- Using the flat end of a spudger, flip up the retaining flap on the ZIF connector for the D-Pad/power button cable.
- With the pointed end of the spudger, pull the D-Pad/power button cable from its connector on the motherboard.



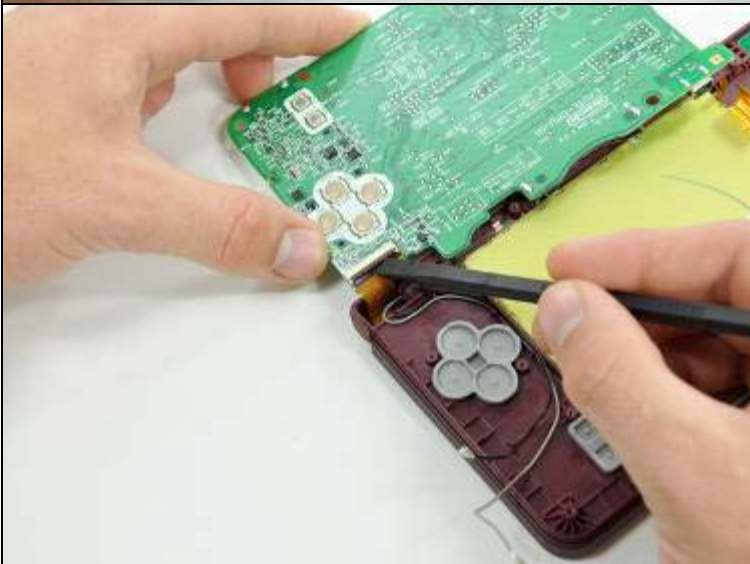
- Using the flat end of the spudger, pry the battery cable up off its socket on the motherboard.



- Remove the screws securing the motherboard to the upper case:
 - A single 2.5 mm silver Phillips screw
 - Four 3.7 mm black Phillips screws



- Rotate the motherboard off the lower case.
- The motherboard cannot be completely removed yet. It is still attached by the upper LCD's display data ribbon cable.



- Using the flat end of a spudger, flip up the retaining flap on the upper display data cable ZIF connector.
- With the pointed end of the spudger, pull the upper display data cable from its connector on the underside of the motherboard.
- The motherboard is now free from the upper case.



- Turn the DSi XL over and open the display.
- When re-assembling the device, be sure to re-install the ABXY and Start/Select buttons, as they are likely to fall out once the handheld console is turned over.
- Use a pushpin to remove the four plastic screw covers on the front bezel.
- Remove the four 3.5 mm silver Phillips screws securing the rear bezel to the front bezel.



- Using two hands, gently slide the rear bezel upwards.
- The rear bezel will move only about 2 mm.



- Separate the rear bezel from the front bezel.
- Do not attempt to completely remove the rear bezel yet. It is still attached to the front bezel by the rear-facing camera.
- Using the flat end of a spudger, pry the rear camera off the rear bezel.
- Remove the rear bezel.



- Close the DSi XL and turn it over.
- Using a pair of tweezers, pull the microphone out of its housing in the front bezel.
- De-route the microphone cable, and pull it through the right hinge.



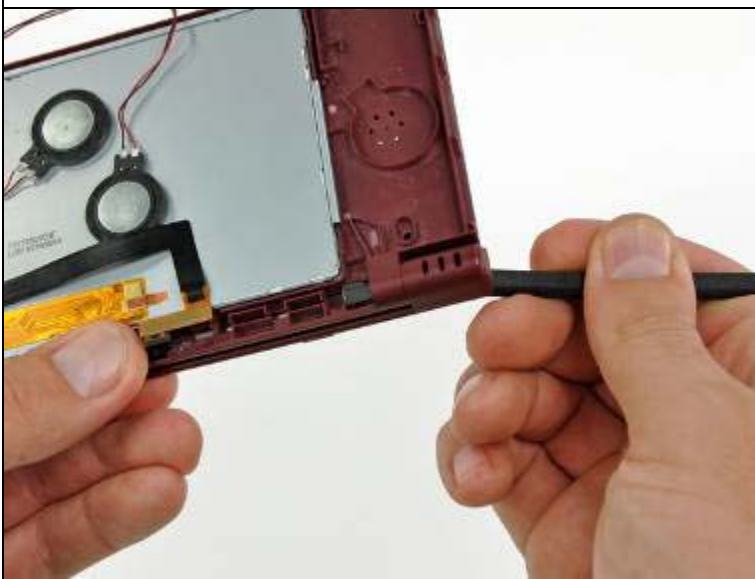
- Using the flat end of a spudger, pry the left speaker out of its socket on the front bezel.
- De-route the speaker cable along the top edge of the screen.
- Work carefully and slowly, holding onto the wire and not the speaker itself. The solder joints may break if pulled on too hard.
- In the same manner described above, remove the right speaker from its socket on the front bezel.
- Place both speakers on the back of the upper LCD.



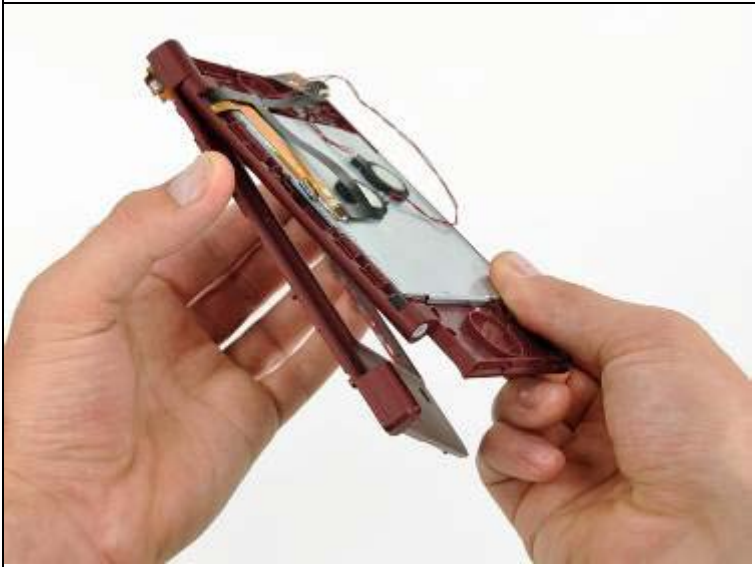
- Ensuring that the upper LCD does not fall out of the front bezel, turn the DSi XL over.
- Remove the seven 2.5 mm silver screws securing the power board to the upper case.
- Lift the power board up off the upper case.



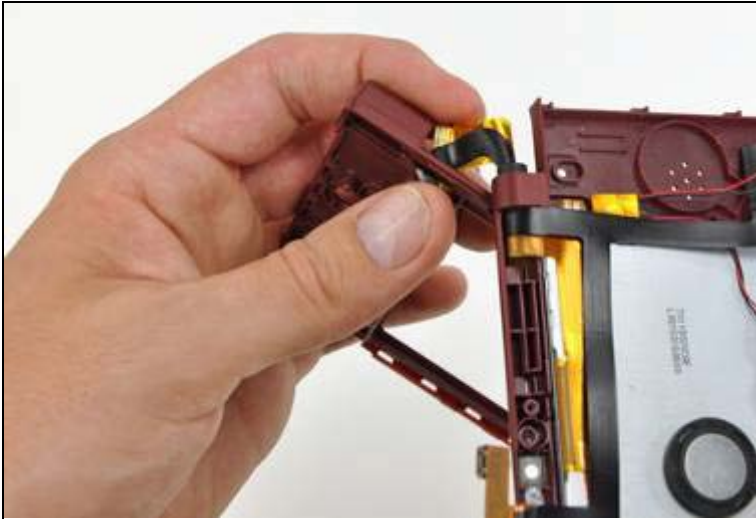
- Using a pair of tweezers, remove the LED diffuser bracket and the LED diffuser from the upper case of the DSi XL.



- In the following steps, you will be using a spudger to remove the hinge pin from the left side of the DSi XL.
- Place the tip of a spudger in the LED diffuser compartment, on the face of the clutch hinge.
- Push the clutch hinge to the left.
- Some force will be required. You will hear an audible "pop" when the clutch has cleared the lower case. It will move about 0.25".



- Lift the left side of the front bezel away from the upper case.
- Do not lift too far, or else the hinge pin will break. Only lift enough to clear the LED compartment, about 1".
- Pull the front bezel to the left, separating the front bezel from the upper case.
- Do not attempt to fully separate the two halves yet. There are still ribbon cables running through the upper case.



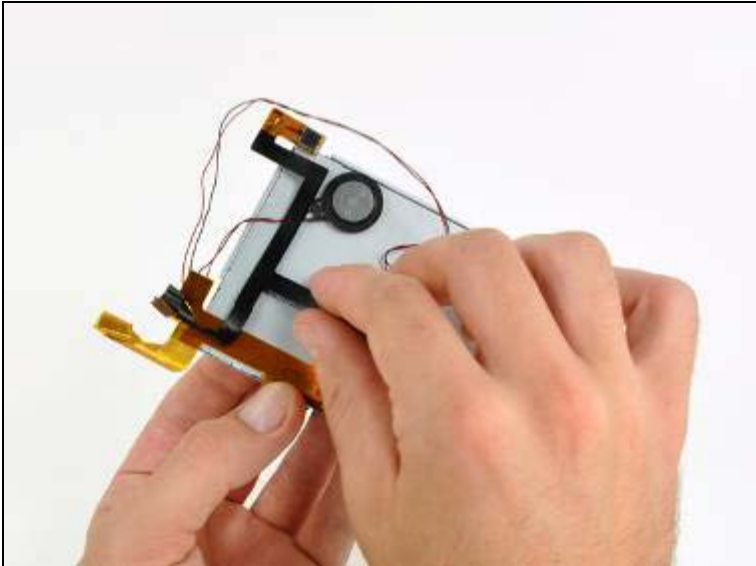
- Grasp the camera and upper LCD ribbon cables between your thumb and forefinger, pulling them out of the upper case slightly, slide them down through the slit in the upper case.
- Rotate the front bezel assembly clockwise so that the ends of the camera and LCD cables slide sideways through the slit in the front bezel.



- In order to remove the upper LCD and the cameras from the front bezel, it is helpful to coil the ribbon cables together.
- Carefully coil the two ribbon cables together, so that the connectors are on the inside of the spool.
- Wrap the ribbon cables tightly, but not too tight, as bending the connectors will render them inoperable.



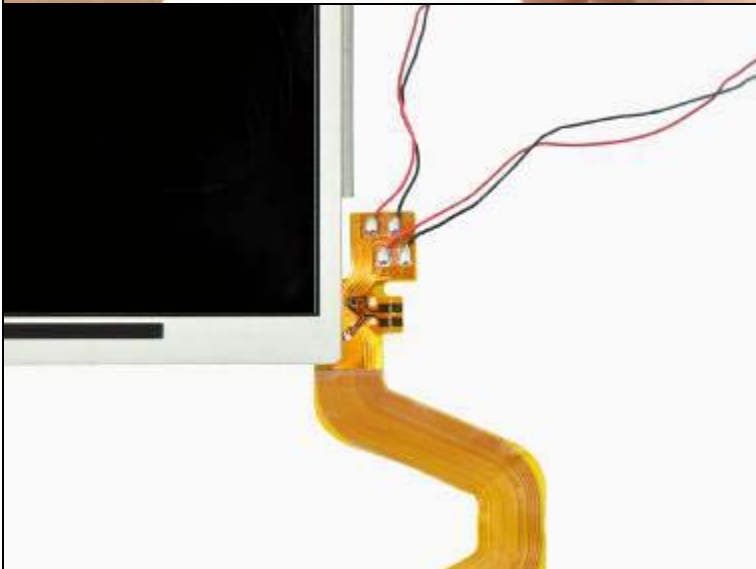
- Holding the upper LCD and the cameras together, pull the cables through the hinge in the front bezel.
- Pull slowly, making sure that the cables do not catch on the hinge pin and tear.
- Uncoil the ribbon cables.



- Lift the camera ribbon cable up off the upper LCD, minding any adhesive that may still be attached.



- Insert the flat end of a spudger underneath the adhesive pad on the front of the upper LCD.
- Slide the spudger to the left, detaching the adhesive pad along the bottom edge, then along the other edges to remove.



- Removing the upper LCD, requires desoldering the speakers from the LCD assembly.
- Desolder the speaker wires.
- During reassembly, keep track of the location of each wire. The black wire is soldered to the right pad; the red wire is soldered to the left pad.
- Upper LCD removed, success.