

iPhone 4S Dismantling Instructions



These instructions will show you how to open the iPhone to replace the digitizer, LCD screen and other internal parts. Opening your iPhone will void your warrantee, and ConsoleParts4U does not accept any responsibility for broken tablets due to the installation process. You proceed at your own risk.



- Your iPhone 4S rear cover may have either two #000 Phillips screws or Apple's 5-Point "Pentalobe" screws ([second image](#)). Check which screws you have, and ensure you also have the correct screwdriver in order to remove them.
- Remove the two 3.6 mm Pentalobe or Phillips #000 screws next to the dock connector.
- During reassembly, we recommend you replace the 5-point screws with equivalent Phillips screws. Our [Liberation Kit](#) provides the tools and screws needed to replace the Pentalobe screws with Phillips screws.
-



- Remove Push the rear panel toward the top edge of the iPhone.
- The panel will move about 2 mm.



- Pull the rear panel away from the back of the iPhone, being careful not to damage the plastic clips attached to the rear panel.
- Remove the rear panel from the iPhone.
-



- Remove the following screws securing the battery connector to the logic board:
- One 1.7 mm Phillips screw
- One 1.5 mm Phillips screw
- Use a plastic opening tool to gently detach the battery connector from the device.



- Use a plastic opening tool to pull the pressure contact from underneath the battery connector.
- When reinstalling the pressure contact, be sure to clean it with a degreaser such as windex or isopropyl alcohol. The oils on your fingers have the potential to create wireless interference.
- Take notice of the small black ground clip on the upper screw of the battery connector.



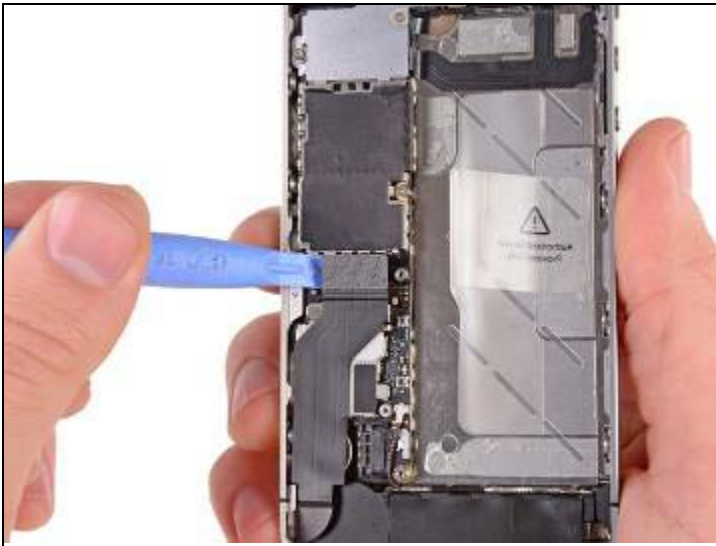
- Insert the edge of a plastic opening tool between the battery and the outer case near the bottom left corner of the iPhone.
- Run the plastic opening tool along the right edge of the battery and pry up at several points to completely separate it from the adhesive securing it to the outer case.



- Use the exposed clear plastic pull tab to peel the battery off the adhesive securing it to the iPhone.
- Remove the battery.



- Remove the following screws securing the dock connector cable cover to the logic board:
 - One 1.5 mm Phillips screw
 - One 1.2 mm Phillips screw
- Remove the metal dock connector cable cover.



- Use the edge of a plastic opening tool to pry the dock cable up from its socket on the logic board.



- Peel the dock connector cable off the adhesive securing it to the logic board and the side of the speaker enclosure.



- Use the edge of a plastic opening tool to pry the cellular antenna cable up from its socket on the logic board.
- De-route the cellular antenna cable out from under the metal fingers attached to the logic board.



- If present, use a pair of tweezers or an opening tool to remove the outer plastic ring located on top of the rear camera's flash assembly.



- Remove the following four screws securing the cable cover to the logic board:
 - One 2.7 mm Phillips screw
 - One 2.6 mm Phillips screw
 - One 1.3 mm Phillips screw
 - One 1.2 mm Phillips screw
 -



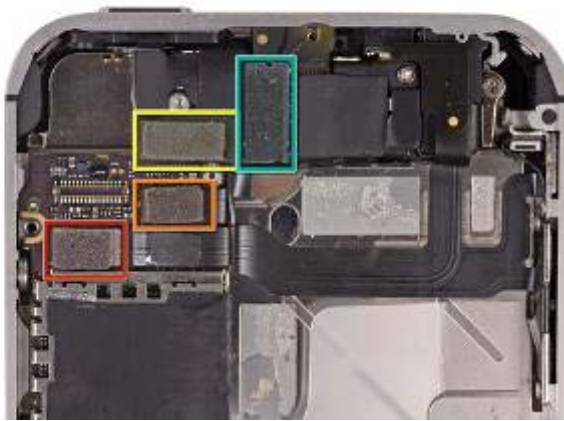
- Use the edge of a plastic opening tool to pry the cable cover tabs out of their slots cut into the EMI shield on the logic board.
- Lift the cable cover from its edge nearest the top and remove it from the iPhone.



- Use the edge of a plastic opening tool to pry the rear camera connector up from its socket on the logic board.
- Be careful not to break any components off the surrounding area on the logic board as you pry upwards.
- Remove the rear camera from the iPhone.
- There is a small rubber gasket that sits underneath the rear-facing camera. Make sure that it is properly seated before reassembly.



- Use a SIM card eject tool or a paperclip to eject the SIM card and its holder.
- This may require a significant amount of force.
- Remove the SIM card and its holder.



- Remove the five cables near the top of the logic board in the following order:
- Headphone jack/volume button cable
- Front facing camera cable
- Digitizer cable
- Display data cable
- Power button cable (located underneath the headphone jack/volume button cable as shown in the second picture.)
- To disconnect the cables, use the edge of a plastic opening tool to gently lift their connectors up and out of the sockets on the logic board.
- Be careful not to break any of the small and delicate surface mount components as you disconnect the cables.



- Remove the 1.5 mm Phillips screw securing the grounding clip to the logic board near the headphone jack.



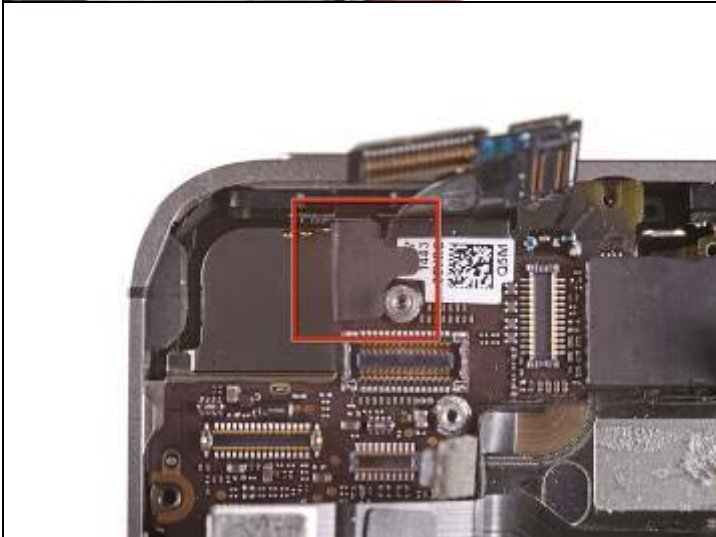
- Lift the small grounding clip up off the logic board and remove it from the iPhone.



- Use a small flathead screwdriver to remove the 4.8 mm standoff near the headphone jack.



- Use the edge of a plastic opening tool to disconnect the Wi-Fi antenna from the logic board.



- If present, peel the piece of black tape covering the hidden screw near the power button.
- Remove the 2.6 mm Phillips screw securing the logic board near the power button.
- (Use caution when removing this screw and removing the power contact held by it; the contact tab will come loose with the screw)



- Remove the following screws securing the logic board to the case:
- One 2.5 mm Phillips screw near the vibrator motor
- One 2.4 mm Phillips screw
- One 3.6 mm standoff along the side of the logic board nearest the battery opening.
- Use a small flathead screwdriver to remove the single 3.6 mm standoff.



- Carefully lift the logic board from the end closest to the speaker enclosure and slide it away from the top edge of the iPhone.
- Remove the logic board.
- Before reassembly, be sure to clean all metal-to-metal contact points on the logic board (**not** the mating halves of connectors) with a de-greaser such as windex or isopropyl alcohol. The oils on your fingers have the potential to cause grounding issues.



- Be sure not to lose the small grounding finger for the rear facing camera near the power button. This finger rests on top of the PCB, screwed down, and covered with the adhesive black plastic tape.



- Wedge the plastic opening tool between the vibrator and the side of the iPhone.
- Pry the vibrator up to release it from the adhesive securing it to the iPhone.
- Remove the vibrator.



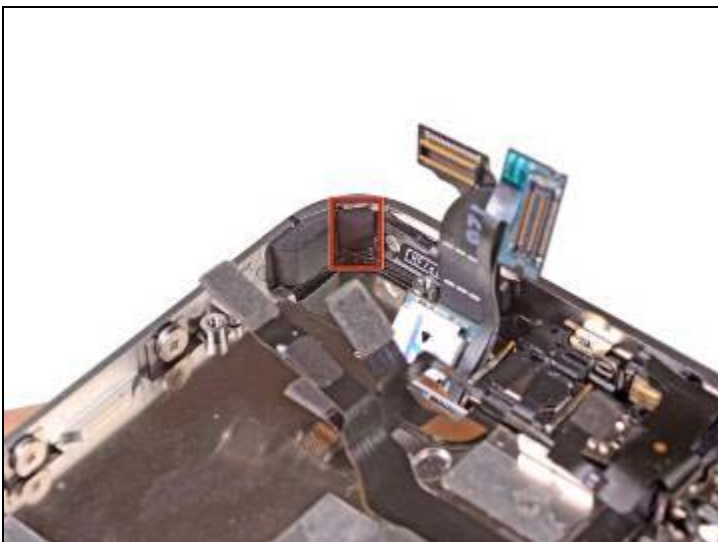
- Remove the two 2.4 mm Phillips screws from the sides of the speaker enclosure assembly.



- Slowly Remove the small plastic bracket that was installed under the screw closest to the dock connector cable.



- Remove the speaker enclosure assembly from the iPhone.
- Before reinstalling the speaker enclosure assembly's screws, be sure the Wi-Fi grounding fingers are installed below the lip in the iPhone's metal case as seen in the second picture.
- Before reassembly, be sure to clean all metal-to-metal contact points between the grounding fingers of the Wi-Fi antenna and the case of the iPhone with a de-greaser such as windex or isopropyl alcohol. The oils on your fingers have the potential to cause wireless interference issues.



- Remove the small pieces of black tape covering the display mounting tabs.



- Remove the 1.5 mm Phillips screw securing the display assembly near the power button.



- Remove the 1.5 mm Phillips screw near the headphone jack.



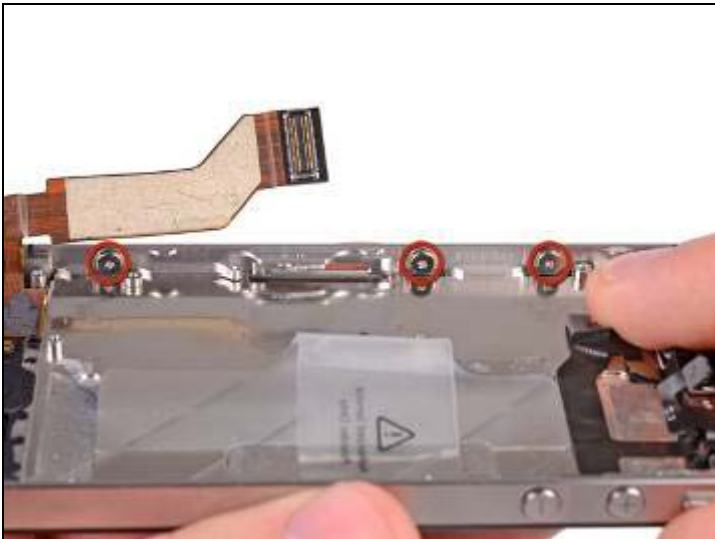
- Remove the 1.5 mm Phillips screw near the lower microphone.



- Remove the 1.5 mm Phillips screw near the dock connector cable.



- Loosen the three large-headed Phillips screws along the volume button side of the iPhone about one half turn.
- It is not necessary to completely remove these screws. When reinstalling the display assembly, be sure the washers are closest to the screw head (as seen in the second picture).



- Loosen the three large-headed Phillips screws along the other side of the iPhone about one half turn.



- Use the edge of a plastic opening tool to gently pry up the display assembly around its perimeter.
- Remove the display assembly from the iPhone.
- When reinstalling the display assembly, make sure the digitizer and display data cable are completely pulled through the slot cut into the outer case. Otherwise, the digitizer cable will not reach to its socket on the logic board.
- Remember to [switch the home button](#) from your old display to the new display (in most cases, this is not provided). Also check that the mesh for the speaker hole is present in the replacement; if not, move it over from the old display.
- After reassembly, protect your new display from any scratches by installing a new [screen protector](#).

