

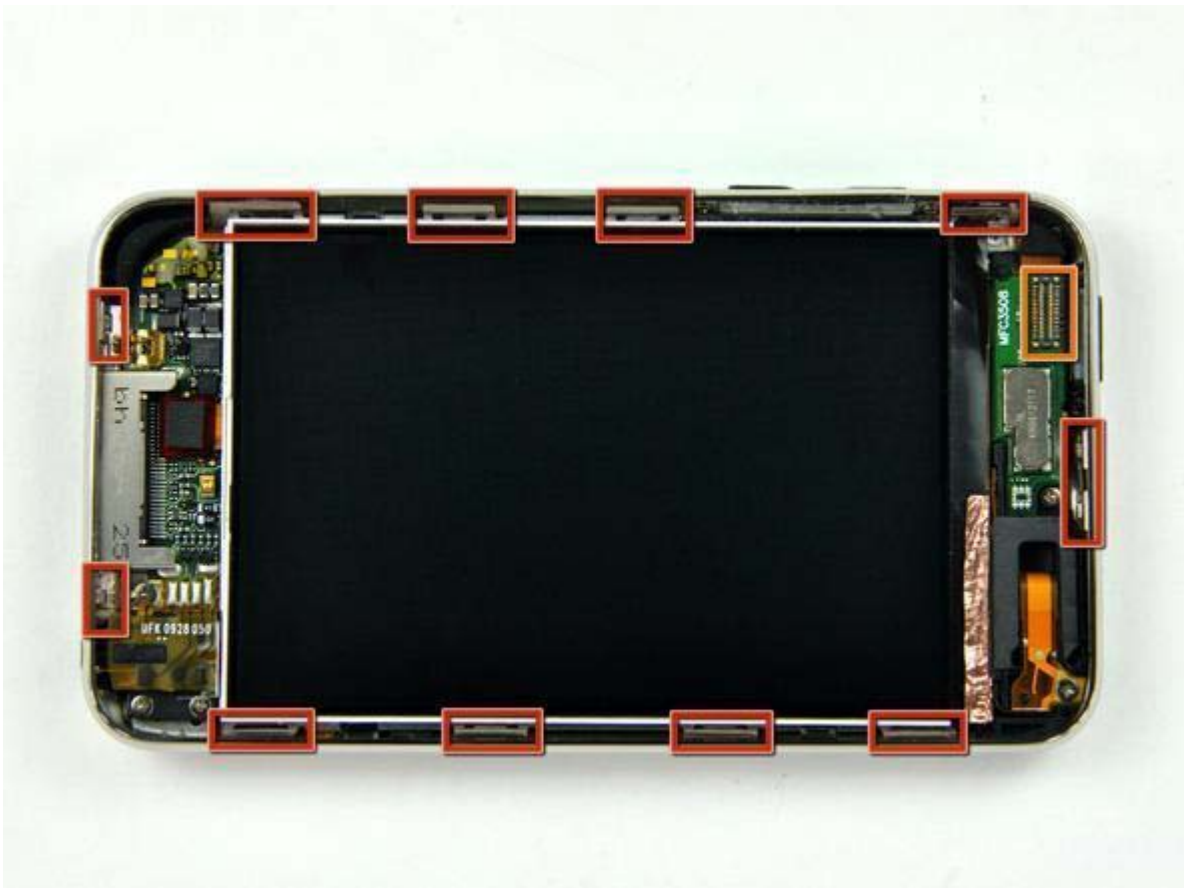
iPad Touch 3 Dismantling Instructions



ConsoleParts4U

Quality Parts & Fast Delivery
www.consoleparts4u.co.uk

These instructions will show you how to open the iPod to replace the digitizer, LCD screen and other internal parts. Opening your iPod will void your warranty, and ConsoleParts4U does not accept any responsibility for broken tablets due to the installation process. You proceed at your own risk.



- Gently insert a plastic opening tool between the glass front panel and its plastic surround near the volume control buttons.
- Rotate the tool away from the Touch to pry up on the glass panel.
- The key is to work slowly and gently to avoid breaking internal components.
- If you are having difficulties using a plastic opening tool. You could try a razor blade, we found it easier to release the clips with one. Please be **extremely** careful if you take this route!



- Insert the plastic opening tool between the front panel and its plastic surround and pry up at several points along the left edge of the Touch.
- Do not insert the tool and run it down the edge of the front panel. This may damage the front panel and the rubber seal. It is best to work one point, pry up, then remove the tool and reinsert it at the next spot to be pried up.



- Continue prying up the left edge until the top and bottom edges start to lift out of the Touch.
- Once the top and bottom edges have lifted slightly out of the Touch, use the opening tool to assure the plastic surround is detached from the clips along the inside of the Touch.



- Pry up the front panel along the right edge using the method described in previous steps.
- Eventually work around the entire perimeter of the front panel until it is lifted slightly from the rear panel.
- Also, ensure that the plastic surround is separated from the clips in the rear panel.



- Carefully Lift the front panel out of the rear case minding the cable still attaching it near the upper left corner of the Touch.
- Make sure you DO NOT tear the display's touch screen connector cable. Tearing this will render your display useless.
-



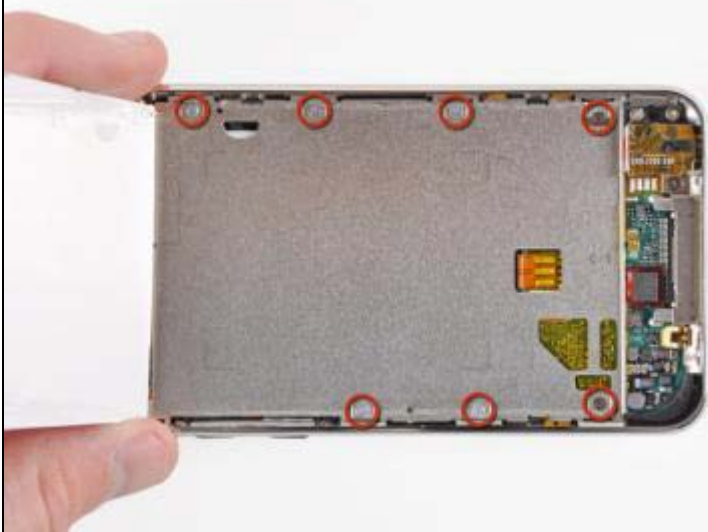
- Use the flat end of a spudger (or an opening tool) to pry the touch screen cable connector up off the upper logic board.
- Now that the front panel is out, check it for damage. If the plastic surround is not flush with the front face of the glass panel, gently peel it off and stick it down.
- Be careful not to scratch the front panel on the underside of the black portions, as the scratches will be visible once the device is reassembled.
- Be sure to clean both the face of the display and the inner surface of the front panel, as any dust or fingerprints will be trapped inside the Touch once it is fully reassembled.



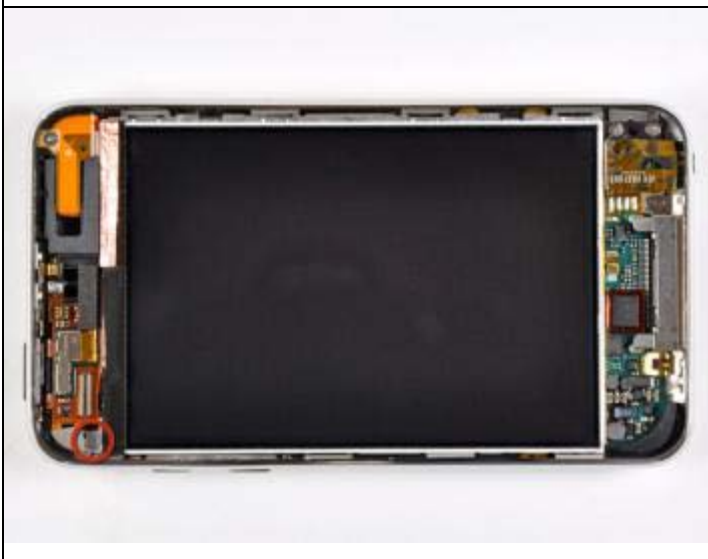
- Insert a small iPod opening tool with the edge angled up toward the underside of the display between the white plastic backlight and the metal shield beneath it.
- Pry up along the lower edge of the display enough to grab it with your fingers.



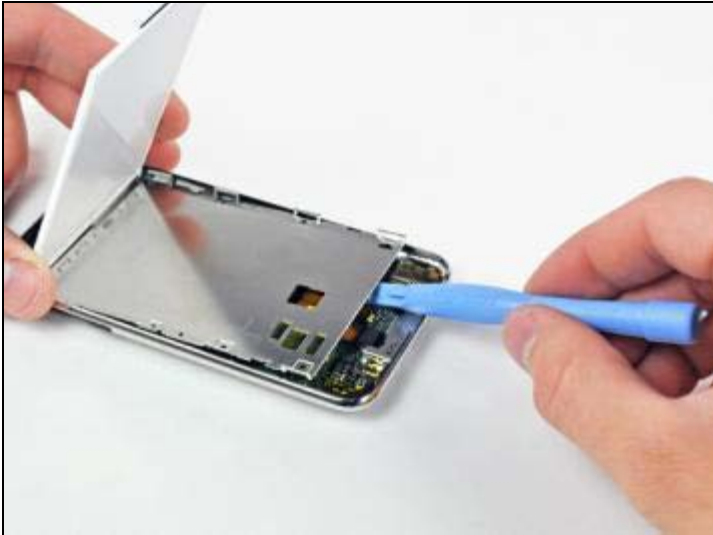
- Lift the display up from its lower edge and rotate it toward the top of the Touch.
- The next few steps require removal of components under where the display normally sits. Be sure to hold the display to avoid putting tension on the delicate display ribbon cable.



- Lift the display up from its lower edge and rotate it toward the top of the Touch.
- The next few steps require removal of components under where the display normally sits. Be sure to hold the display to avoid putting tension on the delicate display ribbon cable.
- Remove the seven Phillips screws securing the metal display tray to the rear panel.
- The two darker screws belong in the two holes in the tray nearest the bottom edge of the Touch.



- Lay the display back down into its tray.
- Remove the final Phillips screw securing the metal tray to the rear panel.



- Lift the display out of the metal tray and rotate it toward the top edge of the Touch.
- Use an iPod opening tool to lift the metal display tray and rotate it up toward the top edge of the Touch.



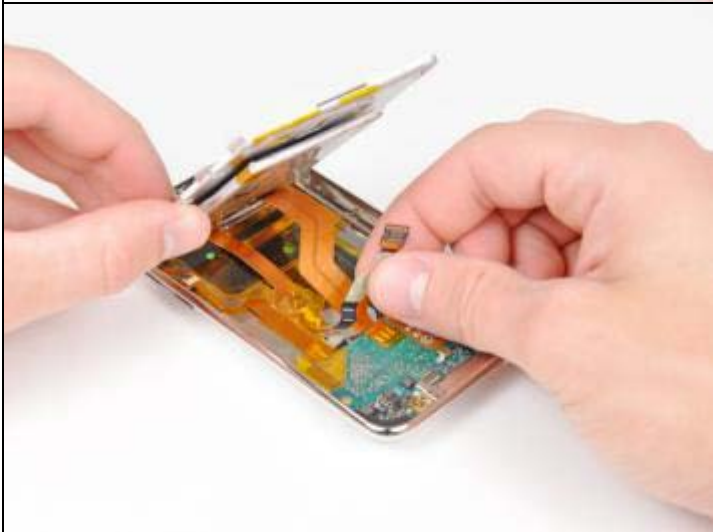
- Use the edge of an iPod opening tool to peel the copper tape off the top edge of the display.
- Leave the copper tape attached to the metal display tray.



- Use the edge of an iPod opening tool to remove the piece of tape covering the display data cable.



- Use an iPod opening tool to pry the display data cable connector up off its socket on the logic board.



- Peel the display data cable off the adhesive securing it to the rear panel.



- Lift the metal display tray slightly (the battery is attached to its underside) and remove the display from the Touch, minding its delicate cable that may get caught.
- The display ribbon cable is routed under the metal display tray.
- That's it touch screen and LCD picture screens removed.