

Nintendo DS Bottom LCD or Touch Screen Replacement

This tutorial will show you how to open the bottom half of the DS and replace the LCD screen and/or touchscreen.

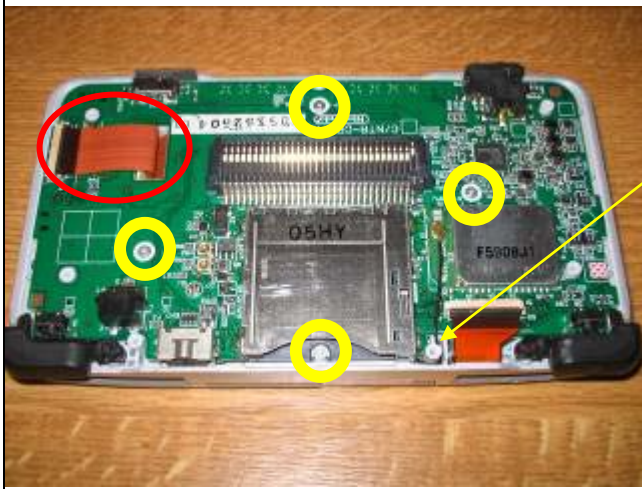


First, you have to remove the screw retaining the battery cover (circled). Remove any game cards and the slot-2 filler piece and the stylus pen.



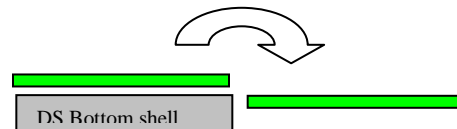
Next remove the 7 tri-head screws (circled).

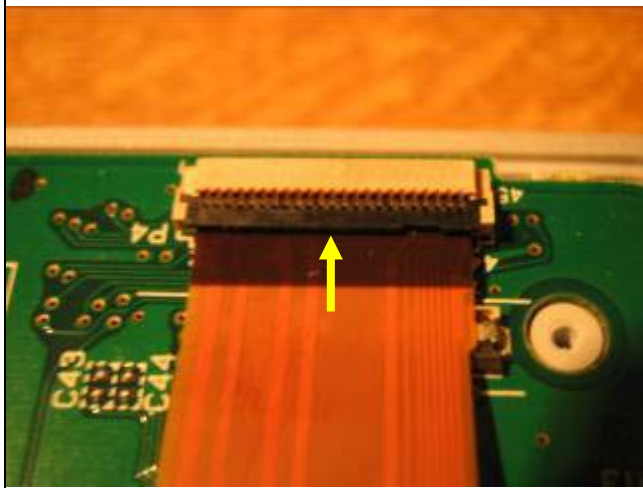
The bottom cover now just lifts straight up and off.



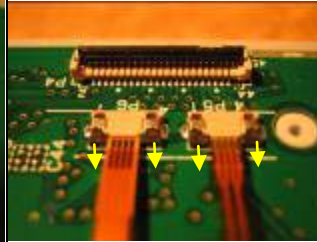
With the bottom casing removed you can now see the 4 cross-head screws holding the circuit board in place, which need to be removed.

You might find it of help to lift the black wire out from behind this screw position to allow you to flip the PCB over. You don't have to remove the top LCD connector to flip over the PCB just use this edge as the turning point.





Unfasten the clip holding the lower LCD screen ribbon cable and remove the cable (circled in red above). Use a small flat head screwdriver to lift the clip (arrowed)



Under the main LCD ribbon cable are the touch screen and backlight ribbon connectors, unclip them by pushing gently in the direction of the arrows the brown clips.

The screen assembly is now loose ready to lift out.

Using a small flat screwdriver, gently prize the touch screen off the LCD screen.

Now you can either replace the LCD screen or the Touch screen or both, replace in reverse order and your done.