

Nintendo DS lite TOP, Bottom LCD's and/or Touch Screen Replacement

These instructions will show you how to open the DS lite to replace the Top, Bottom LCD,s and/or touch screen. Opening your Console will void your warrantee, and we does not accept any responsibility for broken consoles due to the installation process. You proceed at your own risk. **Remove** battery, game cartridge, stylus pen and slot 2 plug before commencing work.



Remove the square rubber screw covers with a small flat head screwdriver or craft knife. Remove the 4 x posidrive screws. (Photo left)

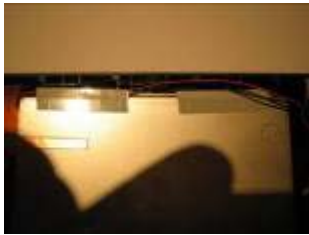
Next close the case and push the top cover from the hinge point, using both thumb nails together to push it parallel, away from the hinge about 3mm. Then the top outer cover can be lifted off. (photo below)



With the top cover removed, open the top up as if you are going to play on it, then gently push out the LCD unit from the casing starting at the top corner. (photo to left)



The LCD has a seal which has to be removed from the old screen to use on the new. (photo left)



The top LCD has 4 x speaker connection which have to be unsoldered. Please note which cable goes where before removing, always useful to draw a quick sketch it helps when you put it back together.



Also note how the speaker cables tuck into channel in the edge of the screen and the tape holds them in place. (photo top left)

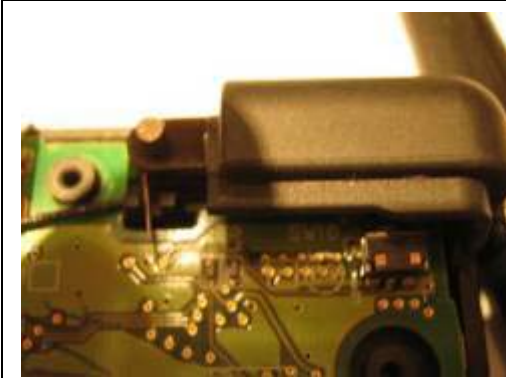
Useful note when refitting either ribbon cable, you need to push the ribbon into the clip housing until the jutting out edges circled meet the edge of the clip socket then fasten the clip down. (photo left)

To get at the ribbon cable out it is now necessary to remove the bottom casing. A special “Y” head Nintendo console screwdriver is required to proceed. You will need to remove the lid by undoing the 2 screws that fasten the lid hinge in place from underneath the right control button. With the upper lid loose you can see the very fine slot in the left hand hinge point that you have to manipulate the ribbon cable through. (See Picture to right)



Next remove the 4 tri-head screws (circled) and the 3 cross-head screws. 2 of the cross head screw are hidden under the 2 small rubber feet. The rubber feet pick out with a small screwdriver and have sticky adhesive so keep to one side to stick back in at the end.

Also note the position of the volume control and power switch sliders. Then lift off the bottom casing. (Important when refitting the bottom casing)



Useful picture of control button showing the correct refitting position of pin and spring, as you will find that both buttons will fall out when you remove the bottom casing. They have to be removed to proceed.



This is the clip for the upper screen, (circled on main photo to left) use a small flat head screwdriver to gently open it.



Top LCD disassembly finishes here, refit in reverse order.



To replace the Lower LCD and Touch Screen please continue.

With the bottom casing removed you can now see the 2 cross-head screws holding the circuit board in place, which need to be removed. (photo left) Flip circuit board over about the hinge to view underside.



Unfasten the clip holding the touch screen ribbon cable and remove the cable. **Please note that the clip opens from the back and NOT the front.**

Flip circuit board over about the hinge to view underside to get to the lower LCD clip.

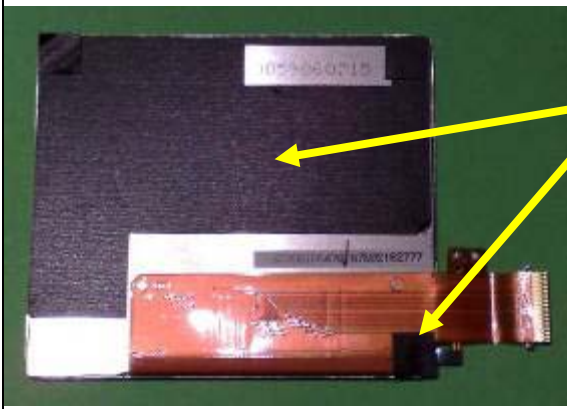


Unfasten the clip holding the LCD screen ribbon cable and remove the cable.

The screen assembly is now loose ready to lift out.

Using a small flat screwdriver in the position arrowed, gently prize the touch screen off the LCD screen.

Now you can either replace the LCD screen or the Touch screen or both, replace in reverse order and you are done.



Important Note: Please insulate the back of your new Lower LCD screen, in the same positions as what you will find on the back of your original screen. (see picture left)

2 layers of insulation tape will be adequate.

Failure to do so can result in a short circuit, which will be very costly to repair.