

## Sony PS2 Slimline Dismantling Instructions



These instructions will show you how to open the PS2 Slim console to replace the laser. Opening your Console will void your warranty, and ConsoleParts4U does not accept any responsibility for broken consoles due to the installation process. You proceed at your own risk.



### Step 1 — Outer Shell

- Flip the PS2 on its back.



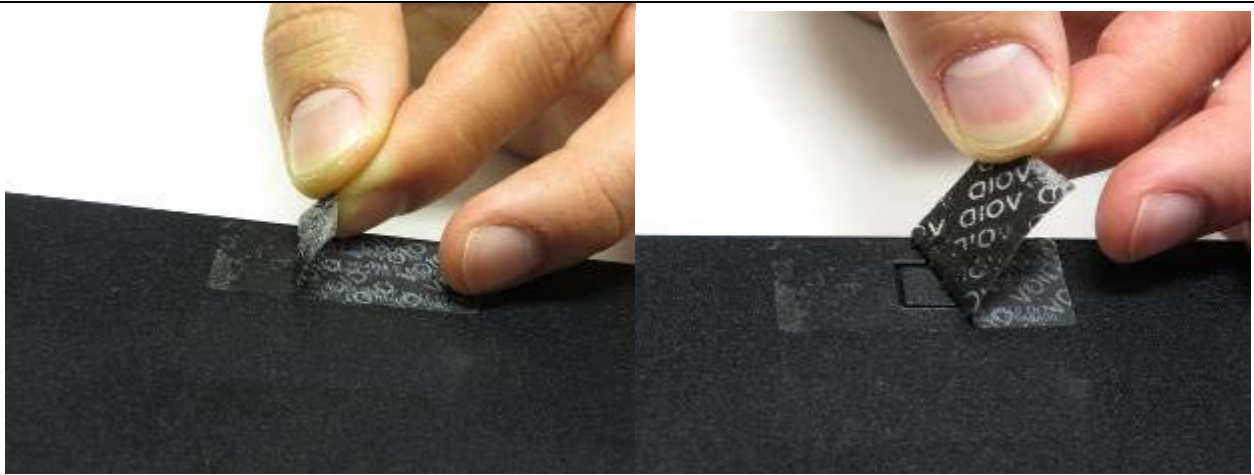
### Step 2

- Locate the six feet (two of which are rubber and the other four are plastic) on the bottom of the PS2. Note: One of the feet is located under the black sticker located at the bottom center of the device.



### Step 3

- Use a spudger, screwdriver, or fingernail to lift the rubber or plastic feet from the bottom of the device.



#### Step 4

- The sixth and final foot is located under the black sticker.
- **IMPORTANT:** By peeling this sticker off to remove the rubber foot, you **WILL** void the warranty of your PS2. Proceed at your own risk.



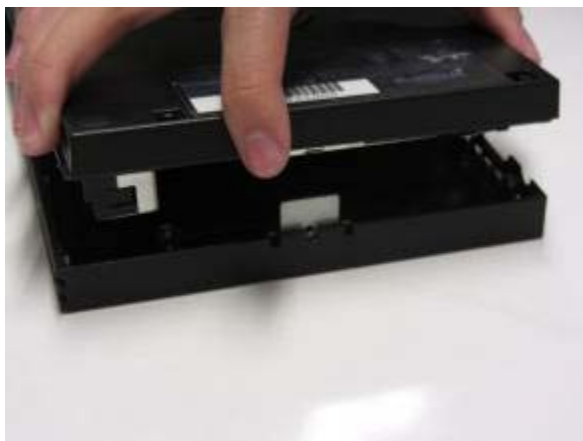
#### Step 5

- After all the feet have been removed, locate the six 4.0mm screws that have been revealed at the base of the PS2.



### Step 6

- Use a #1 Phillips screwdriver to unscrew all six 4.0mm screws from the base of the PS2.



### Step 7

- After all the screws have been removed, lift from the side containing power cable and Ethernet port (this side needs to come up first). This may take some force to remove the plastic backing from the main portion of the device.



 [EditStep 8](#)

- If done correctly, you should have a fully detached plastic backing, revealing the electronic components of the PlayStation 2.

To reassemble your device, follow these instructions in reverse order.

