

## Sony PS3 Slim Dismantling Instructions



These instructions will show you how to open the PS3 console to replace the laser. Opening your console will void your warranty, and ConsoleParts4U does not accept any responsibility for broken consoles due to the installation process. You proceed at your own risk.



### Step 1 — Top Cover

- Turn the PS3 over and lay it on its backside.
- Carefully peel the warranty sticker up off the lower case to reveal a hidden screw cover.
- To avoid activating the **VOID** that may come up, heat the sticker carefully to remove and replace it cleanly.



## Step 2

- Use the flat end of a metal spudger to pry up the seven screw covers around the edge of the lower case.



### Step 3

- Remove the seven 37 mm Phillips screws securing the top cover to the lower case.



### Step 4

- Remove the three 13.3 mm T8 security Torx screws beneath the Blu-ray drive opening. (Some models may have a fourth screw on the corner.)



### Step 5

- Lift the top cover from its rear edge and rotate it toward the front of the PS3.
- Lift the top cover off the PS3.



### Step 6 — Power Supply

- Squeeze the AC inlet connector's locking mechanism and pull straight up to disconnect it from the power supply.



#### Step 7

- Pull the DC-Out cables straight up to lift their connector up and out of its socket on the power supply.



#### Step 8

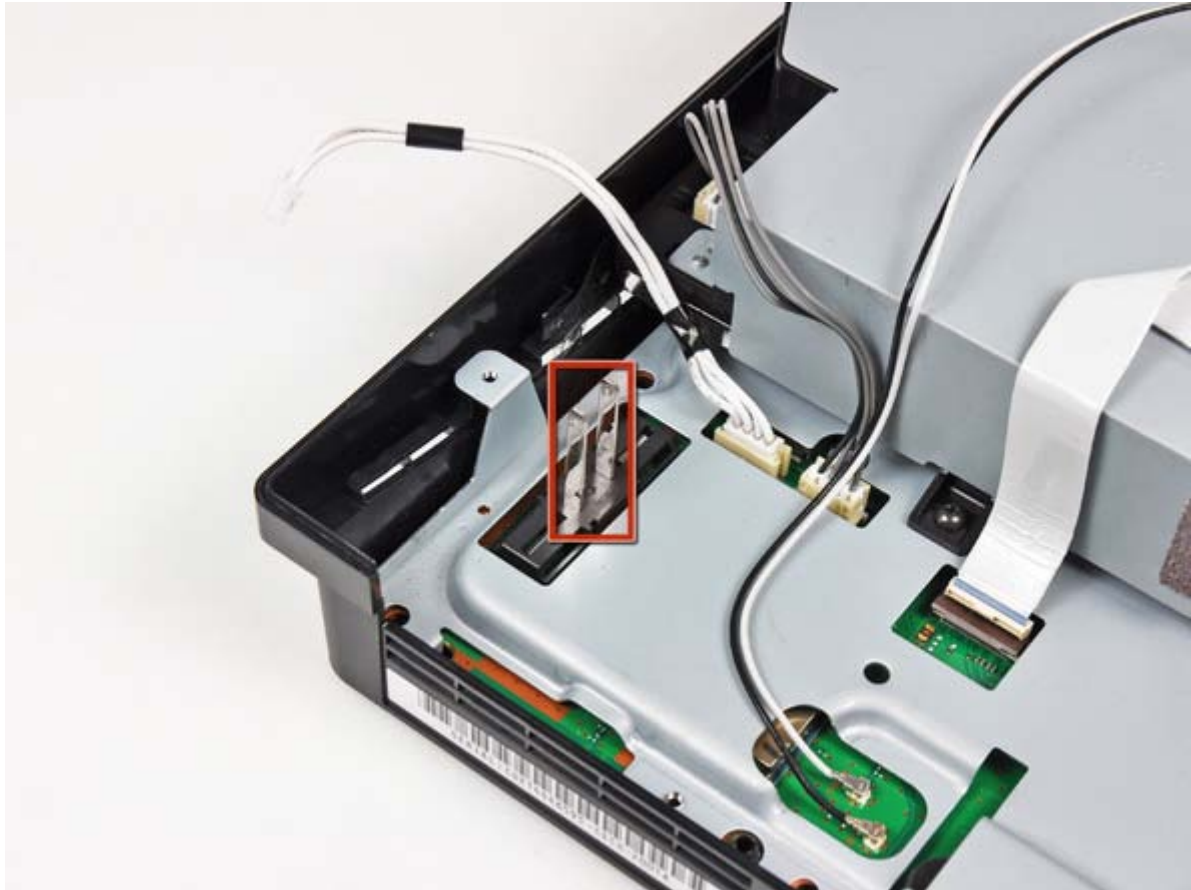
- Remove the two 7.6 mm Phillips screws securing the power supply to the lower case.



**Step 9**

- Lift the power supply upward from its left edge as viewed from the front of the PS3.





### Step 10

- Continue to lift the left edge of the power supply until it lifts off the two metal posts shown in the second picture.
- Remove the power supply from the PS3, minding any cables that may get caught.



**Step 11 — Blu-ray Disc Drive**

- If present, remove the pieces of tape securing the cables to the body of the Blu-ray drive.





### Step 12

- Use the flat end of a spudger or your fingernail to flip up the retaining flap on the Blu-ray ribbon cable socket.
- Be sure you are prying up on the movable retaining flap, **not** the socket itself.



### Step 13

- Pull the Blu-ray ribbon cable straight up and out of its socket.



#### Step 14

- Pull the Blu-ray power cable straight up to lift its connector out of the socket on the Blu-ray drive.



#### Step 15

- Remove the single 9.5 mm Phillips screw securing the Blu-ray drive to the lower case.



### Step 16

- Lift the Blu-ray drive slightly by its right edge to dislodge the control board from its housing.
- Remove the Blu-ray drive from the PS3.
- After you reinstall the Blu-ray drive, be sure the control board is firmly seated in the lower case before proceeding.
- On 120GB/250GB consoles (CECH-20xxA to 21xxB models), swap the internal BRDrom drive logic circuit board from your old drive into the replacement drive. This is due to the copy protection Sony have written into the logic board firmware. This logic board swap is not required on the 160GB/320GB consoles (CECH-25xxA to 30xxB models),.

To reassemble your device, follow these instructions in reverse order.